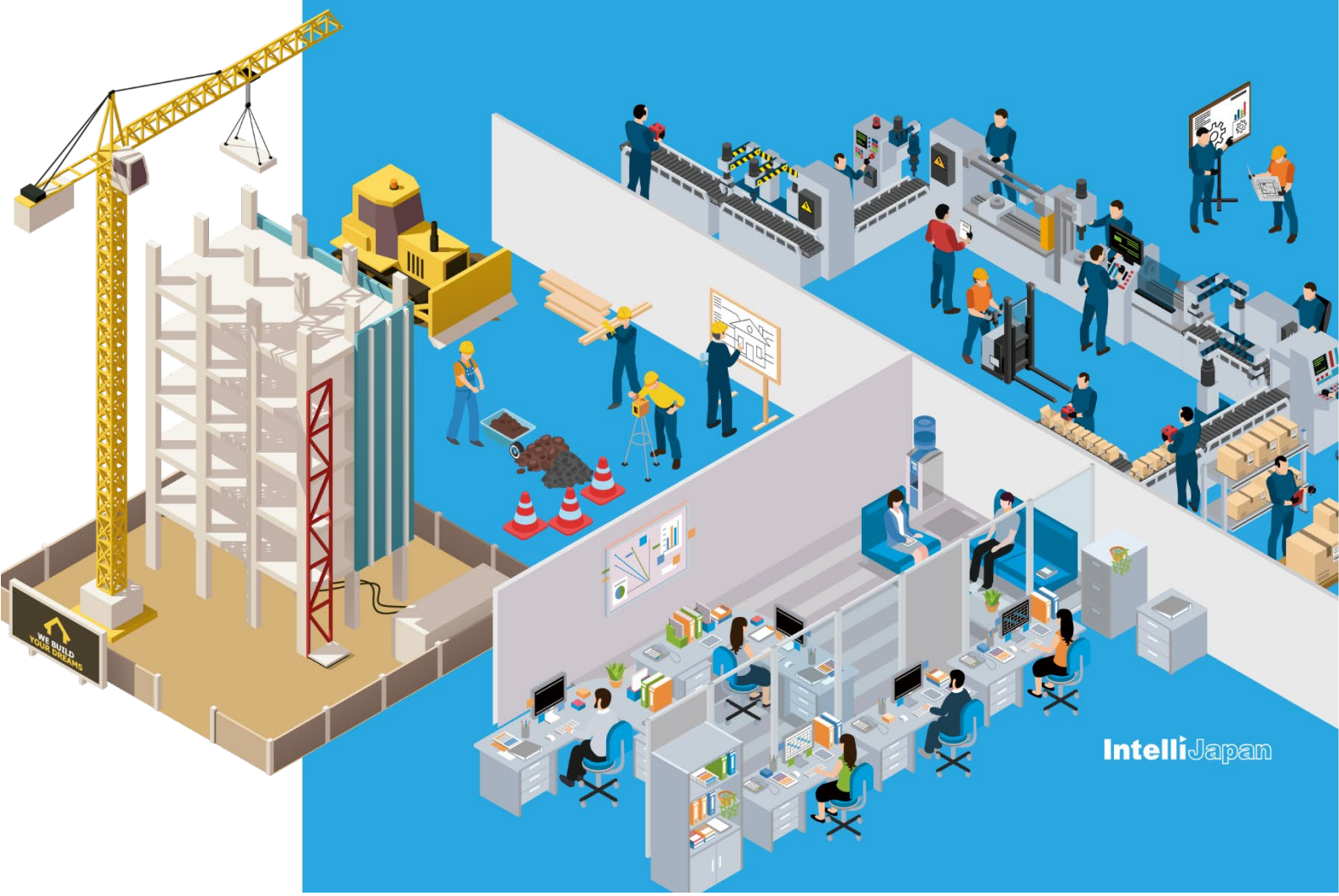


IJCAD 2022

Setup Manual



IntelliJapan

Introduction

Thank you for choosing IJCAD.

This manual will guide you through the information on setting up IJCAD, including preparation for using your purchased IJCAD, downloading products, registering/returning licenses, and upgrading products.

We hope you will find it useful.

Please note that this manual does not contain instructions on operation or product features.

Further questions

If you have any questions about the product, please refer to our Help Center.

IJCAD Help Center <https://support.ijcad.jp/hc/en-us>

** ** *

Revision History

September 01, 2022 First edition of IJCAD 2022 Setup Manual issued
November 01, 2022 Second edition of IJCAD 2022 Setup Manual issued

INDEX

1. Before Installation

- 1-1. Operating Environment ----- 1
- 1-2. Transition method from Trial version to Product version ----- 3
- 1-3. Setting migration ----- 4

2. New Installation of Program

- 2-1. Prepare for the installation ----- 5
- 2-2-1. Download from WEB ----- 6
- 2-2-2. Load from DVD ----- 7
- 2-3. Installation ----- 8

3. License Registration

- 3-1. Standalone version (On-line) ----- 11
- 3-2. Standalone version (Email Application) ----- 12
- 3-3. USB version ----- 16
- 3-4. Network License version ----- 17

4. Return / Transfer the License

- 4-1. Standalone version (On-line) ----- 18
- 4-2. Standalone version (Email Application) ----- 20

5. Update Installation

- 5-1. Before Update Installation ----- 23
- 5-2. User Registration ----- 23
- 5-3. Update Installation procedure ----- 24

6. Uninstall of program

- 6-1. Before Uninstallation ----- 26
- 6-2. Uninstallation Procedure ----- 29

7. Subscription License

- 7-1. Attention ----- 31

8. Installation for Version Up

- 8-1. Standalone version ----- 32
- 8-2. USB Version ----- 33
- 8-3. Network License version ----- 39

1. Before Installation

Be sure to check the following contents before installing product software.

1-1. Operating Environment

Introduction Environment

The following operating environment is necessary for this product.

CPU	More than Core i5 (recommended)
RAM	4GB More than 8GB (recommended) Recommended 64bit OS
HDD(SSD)	More than 550MB 以上
PC/OS	Windows 8.1 Windows 10 (21H2) Windows 11 (21H2) Recommended 64bit OS
Display card	2GB GPU (recommended)
Network License Server	[In case to Network License Server] Windows Server 2012 R2 Windows Server 2016 Windows Server 2019
OPTION	.NET Framework 4.8 (※)
	[In case to install from DVD] DVD-ROM Drive

- ※ Please check the latest information of supported OS on the WEB site (<https://www.ijcad.jp/>).
- ※ If ".NET Framework 4.8" version is not installed on your computer, Please download "Microsoft .NET Framework 4.8" from IJCAD environment setting module download page (https://www.ijcad.jp/dl_htmls/DL_ijcad_tools.html).

Product Coexistence

In principle, we do not recommend the coexistence of 64-bit and 32-bit versions of the same product.

64-bit and 32-bit versions

- When installing 32 bit version on 64 bit OS, then it will work as 32 bit application.
- Although it is possible to install both 32-bit version and 64-bit version on the same OS, we do not recommend it in terms of operation. **If you use IJCAD in mixed environment of 32-bit version and 64 bit version, we can not guarantee the operation, so please be careful.**

Japanese and English versions

- Products of IJCAD 2017 SP2 or later can install Japanese version and English version together on the same OS.

Solution products (IJCAD, IJCAD Mechanical/Electrical/Civil/Arch/Arch+)

- Multiple solution products can be installed on a single computer.

Product Version

- Different product versions (e.g. 2021 and 2022) can be installed on a single computer.
However, customers on maintenance subscriptions must use them within the scope of the Terms of Use.

Example:

- IJCAD 2022 32bit and IJCAD 2022 64bit ... not recommended
- IJCAD 2021 32bit and IJCAD 2022 64bit ...can be installed
- IJCAD 2022 64bit and IJCAD Mechanical 2022 64bit ...can be installed

Product Grade

- PRO, STD, and LT can be installed on a single computer regardless of version (including trial version).
 - However, only the grade corresponding to the purchased license can be installed and used as the product version.

1-2. Transition method from Trial version to Product version

If you have already installed the Trial version and you are using it, use the following method to transit to the product version.

● Standalone Version

It is possible to change the serial key from the Trial version to the Product version. You may transit to the product version without uninstalling the Trial version. Please see the following "Change serial key to transit to product version".

※ Depend on the situation, the Product version may be newer than the installed Trial version.

Generally, it is recommended to uninstall the Trial version, and then to install the Product version.

● Change serial key to transit to Product version

⇒ Refer to "[3. License Registration](#)"

※ After product activation is completed the product version will be switched on.

● Install product version after uninstalling trial version

⇒ Execute "[6. Uninstallation of program](#)", and then go to "[2. New Installation of program](#)".

● Network version / USB version

It is not possible to change the serial key from Trial version to Product version. Once you uninstall the Trial version, then install the new Product version.

● Install product version after uninstalling trial version

⇒ Execute "[6. Uninstallation of program](#)", and then go to "[2. New Installation of program](#)".

1-3. Setting migration

To migrate customized information such as CUI, templates, profiles, etc. to another environment, use the migration tool.

About setting migration

For how to migrate the settings, please refer to the "マイグレーションツール_マニュアル.pdf" from the document download page below;
(https://www.ijcad.jp/dl_htmls/DL_ijcad_books.html)

Please note that a user login is required to download the document.
If you have not yet registered as a user, please register on the web page (<https://www.ijcad.jp/>).

2. New Installation of Program

The program can be downloaded from the IJCAD site.

If you can not connect to the Internet or want to obtain the program beside download method, please use the optional installation DVD.

The installation procedure is different between from the web site and from the DVD. Please refer to the following item.

- **Installation from the WEB site** ["2-1. Download from WEB"](#)
- **Installation from the DVD** ["2-2. Load from DVD"](#)

2-1.Prepare for the installation

- Please prepare PDF file with the license information sent by email (file name "*license information _ ○○ 様 .pdf*").
- **"Administrator's authority" is required to install.**
- Always close all the other applications before installing. If you install while running the other applications, installation may not be performed normally.

2-2-1. Download from WEB

Download the installation file from WEB site.

① Access to WEB site

Please access the download page, from the indicated URL described in the guidance email sent from us.

② Download the ZIP file

You will enter into the download page of this product's installer.
Please click and download the file, selecting the applicable product grade and bit number for your OS which you purchased.

- **Grade**

Please check the applicable grade and select from LT / STD / PRO.
※ Products of different grades can not be installed.

- **bit number**

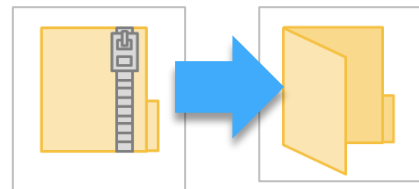
Windows 8.1 / 10 has 32 bit and 64 bit OS version.

If your OS in use is 32 bit, select 32 bit version program, and for 64 bit OS, select 64bit version program.

If your OS in use is Windows 11, select 64bit version program.

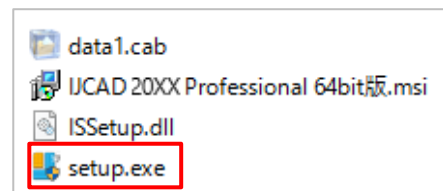
③ Decompress File (Unzip)

The downloaded file is a compressed file.
Please be sure to decompress it.



④ Execute [setup.exe]

Open the folder after decompressing.
Click [setup.exe] in the folder and Right click the mouse to run as administrator.



Then Installer will launch.
Proceed to "[2-3. Installation](#)".

2-2-2. Load from DVD

Open the installer from the DVD setup dialog.

① Load DVD

Insert the installation DVD in the disk drive of the PC.
The following dialog will be displayed depending on the PC environment.
Please click [LoadMenu.exe].

Windows 8.1



Windows 10

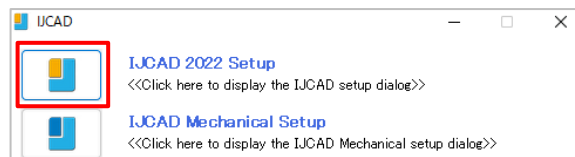


Windows 11



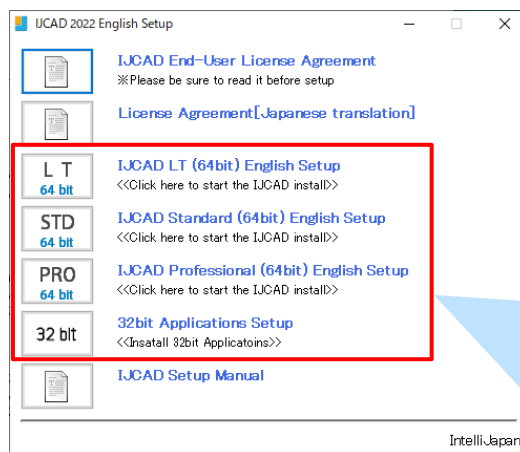
② Open the IJCAD Setup

Click the icon of [**IJCAD 2022 Setup**].



③ Launch the installer

Click the setup icon of the applicable grade and bit number.



[Grade]

Please check the applicable grade and select from LT / STD / PRO.
In case of English version, first select the English version and then grade.

※ Products of different grades can not be installed.

[bit number]

Windows 8.1 / 10 has 32 bit and 64 bit OS version.
If your OS in use is 32 bit, 32 bit version program, and for 64 bit OS, select 64bit version program.

The installer will launch. Proceed to "[2-3. Installation](#)".

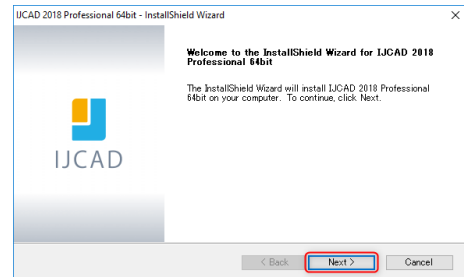
2-3. Installation

Install the product from the installer.

① Launch the installer

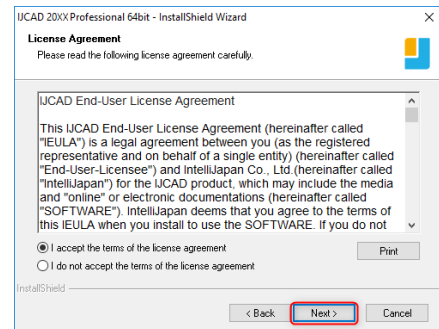
Refer to “[2-1. Download from WEB](#)” and “[2-2. Load from DVD](#)” then launch it.

Click [**Next**] button.



② License Agreement

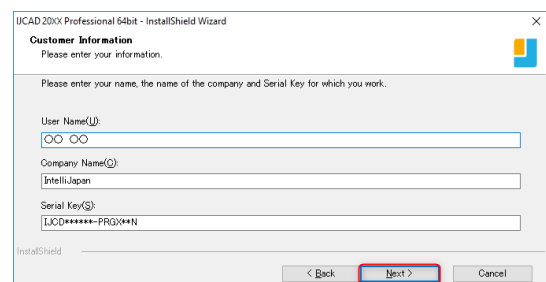
Confirm IJCAD software license agreement. If you can agree with it, check the check box "**I agree with all the terms of the license agreement**". Please click [**Next**] button.



③ Input User Information

Key in User name, company name, serial key and click [**Next**] button.

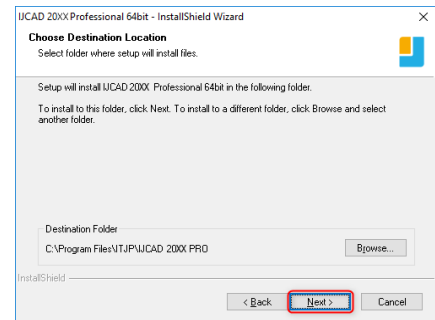
About the serial key, refer to the information sent by email PDF file in the license information.



④ Select the installation destination

If you want to select the installation destination folder, click [**Browse**] button to define.

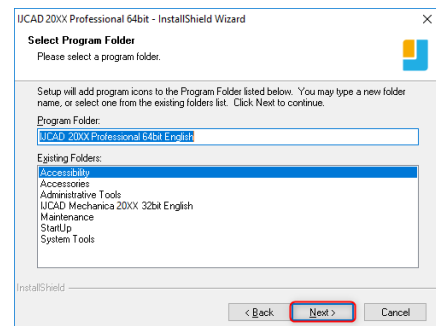
If it is not necessary to specify, click [**Next**] button to proceed.



⑤ Select the program folder

If you want to select the program folder, click [**Browse**] button to define.

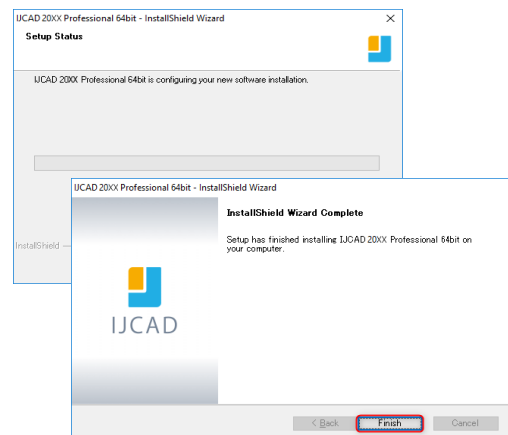
If it is not necessary to specify, click [**Next**] button to proceed.



⑥ Installation

Installation will start soon. Please wait. When the completion message is displayed Click [**Finish**] button.

The icon of IJCAD will be displayed on desktop or start menu.



⑦ Launch

※ Be sure to Launch IJCAD as administrator when running for the first time.

Right-click the mouse on the IJCAD desktop icon, and select [Run as Administrator] from the displayed menu, and start the program.

3. License Registration

After installing IJCAD, if the license is not authenticated, the program will start as a Trial version.

You can use all functions as a trial version for 30 days same as a license authenticated status. But when the trial version expires, you will not be able to save the drawing any more.

It is recommended to authenticate your license as soon as possible.

How to register your license depends on the type of license you use. Please refer to the following items.

Standalone version

You can get license certification of this product by On-line activation.

Refer to "[3-1. Standalone version \(On-line\)](#)".

If you can not connect to the Internet,

Refer to "[3-2. Standalone version \(Email Application\)](#)".

USB version

You can authenticate the license by inserting the USB key.

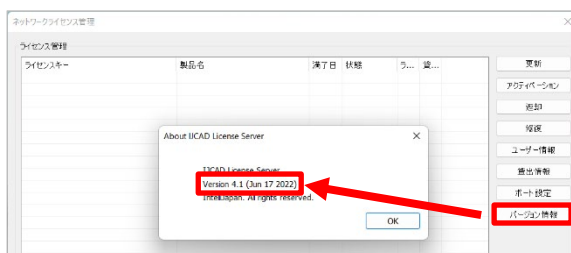
Refer to "[3-3. USB version](#)" for more details.

Network License version

IJCAD 2022 does not support Network license manager before Ver 4.0 (published on 2021/5/1).

If you use IJCAD 2022, please use the latest network license manager.

You can confirm the network license manager's version by the following method.



Please confirm your current version by displayed number.

Please refer to the setup manual of the network license manager in order to know the license registration method on the server side.

Refer to "[3-4. Network version](#)" for authentication on the client side.

3-1. Standalone version (On-line)

Register your license online.

Be sure to operate in an environment where you can connect to Internet.

① Launch Dialog

Start IJCAD.

Then [**IJCAD License Registration**]
Dialog will open.

Click the [**Standalone**] and [**OK**]
button.

② Input User Information

Please be sure to enter an official company name & Registrant's name.

After input, click [**Online authentication**].

These user information and serial key will be registered as the default value.

If it differs from the information to be registered, change it to the correct information.

For Version up

Authenticate by entering the license key you have used and the new serial key.

③ Authentication completed

Confirm the [**Notes**], check the checkbox, and click [**OK**].

The program may start as a trial version immediately after authentication.

In this case, once close IJCAD and restart it, then you will become able to use it with your license authenticated.

3-2. Standalone version (Email Application)

If you cannot perform activation by online, you can apply by email, and Intelli Japan will issue the file for activation.

It takes 2 ~ 3 business days to issue for email application depending on the situation. Please note the deadline of trial version. (If the trial version expires you will be unable to save the drawing.)

① Launch Dialog

Start IJCAD.

Then [*IJCAD License Registration*] Dialog will open.

Select [*Standalone*] button and click [*OK*] button.

② Input User Information

Please be sure to enter an official company name and Registrant 's name.

Click [*Online authentication*] after input.

The user information and serial key registered when installing will be stored as the default value.

If it differs from the information to be registered, change it to the correct information.

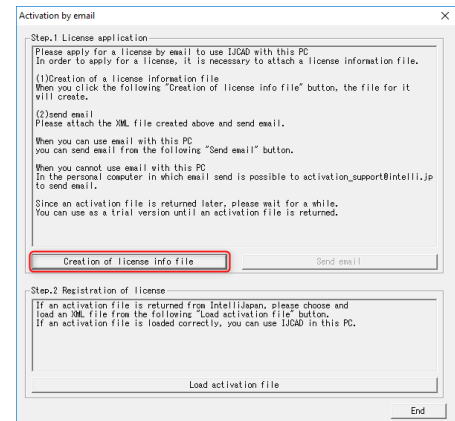
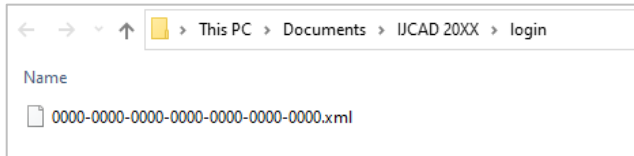
For Version up

Authenticate by entering the license key you have used and the new serial key.

③ Create License File Information

Click [**Create license information file**].

The file name "<license key>.xml" will be automatically created in [**Documents**] » [**IJCAD 2022**] » [**login**] folder.



④ Email Application

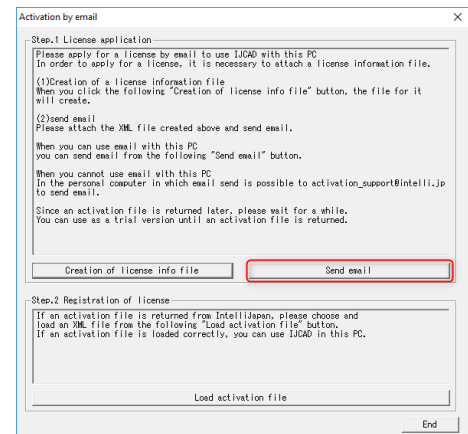
If you can send and receive email to perform authentication, select [**Send Email**] button.

The email screen will open, with necessary information filled in.

※ The email program which is configured to [mailto] function in your PC will launch.

The information file is not attached to the email.

Send us an email certainly with the information file created in step ③.



If you can not send an email, move your information files by USB memory to the computer that can send and receive email to apply. (It is also possible to apply multiple licenses together.)

- | | |
|---------------------------|------------------------|
| • Company Name | • Computer Name |
| • Person in Charge | • Serial Key |
| • Telephone Number | • License Key |
- Please fill the above items into the email with your information file and send to activation_support@intelli.jp.

Please wait for the reply from Intelli Japan after applying.

⑤ Receive Activation File

In a few days, the Activation file will be delivered from Intelli Japan.

Intelli Japan send the activation file from the system automatically, and sometimes the activation information won't reach as an attached file, then it will be included as a link in the email text.

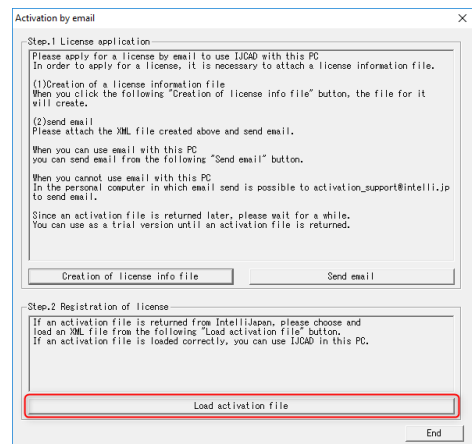
(It may be recognized as an attached file depending on the email software type.)

⑥ Read Activation File

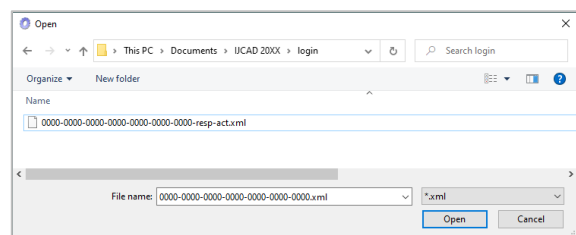
As in the procedure of step ① ~ ③, open [Activation by email] dialog.

Click [Read activation file] button.

By [Open] dialog, the following dialog will open. [Documents] » [IJCAD 2022] » [login]



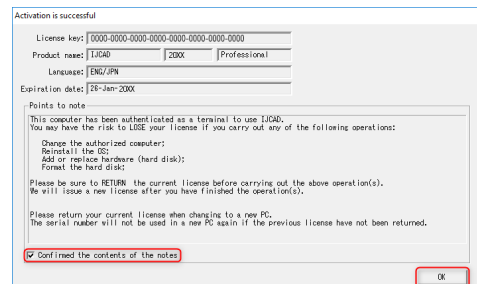
Select the file saved in step ⑤ "<License key> -resp-act.xml" and click [Open].



⑦ Authentication Finish

Once the file is successfully loaded, the license is authenticated and the activation success dialog will be displayed. Check [Notice], check in the box and click [OK].

Immediately after authentication, IJCAD may start up as a trial version. In this case, once close IJCAD and restart it, then you will be able to use it with the license authenticated.



3-3. USB version

Since the USB version authenticates the license by reading the USB key, you do not need to activate it. The license will be verified in the following way.

※ The USB key is for authenticating the license. IJCAD program needs to be installed separately. For details, refer to "[2. New Installation of program](#)"

① Insert the USB key

Insert the USB key of this product into the USB drive of your PC.

※ When the USB is loaded correctly, the part behind the USB glows red.

② Launch Dialog

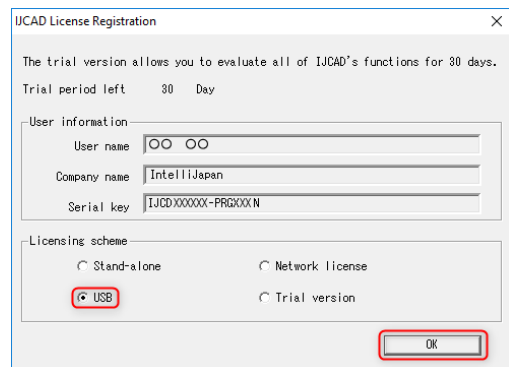
Start IJCAD.

Then [**IJCAD License Registration**] Dialog will open.

Click [**USB**] button and [**OK**] button.

IJCAD will start up with license authorized.

If the USB key is plugged in, the license registration screen will not be displayed from the second launch.



* In case that the USB key is damaged or lost, please contact to Intelli Japan.

3-4. Network License version

First, check the [IP address] and [port number] of the server which IJCAD network license manager is already installed.

(Refer to the Network License Manager document for server settings.)

① Launch Dialog

Launch IJCAD.

Then [**IJCAD License Registration**]
Dialog will open.

Select [**Network License**] button and
click [**OK**] button.

IJCAD License Registration

The trial version allows you to evaluate all of IJCAD's functions for 30 days.
Trial period left 30 Day

User information

User name: OO OO
Company name: IntelliJapan
Serial key: IJCDXXXX-PRGXXXN

Licensing scheme

Stand-alone Network license USB Trial version

OK

② Server Setup

Input the IP address and port number which is
already set up on the server.

Then click [**OK**].

The system will connect to the Network
License Manager and execute the License
authentication.

Server specified

Server name(IP address)

Port: (27000-27009)

Connection Test OK

4. Return / Transfer the License

In case of stand-alone version or network version on the server, first you need to return the license in order to transfer the license to the other PC.

Also, when replacing the HDD, changing the configuration of equipment, etc, please be sure to return the license beforehand because the system may lose your license information.

(If you have not returned your license, you will not be able to authenticate again.)

※ **If it is difficult to return the license at the time of transition due to personal computer breakdown or the other reasons, please consult to IJCAD Help Center.**

Regarding the method to return the license of the network license manager, refer to the setup manual of the network license manager.

4-1. Standalone version (On-line)

You can return the license by online. And it is necessary to connect to internet. If you can not connect to the Internet, refer to "[4-2. Standalone version \(Email Application\)](#)".

① Launch IJCAD License Management

Open the [*IJCAD License Management*] dialog as follows.

For Windows8.1

Select [*Start*] → [*All Application* IJCAD 2022 32 bit / 64 bit version] → [*IJCAD license management*].

For Windows10

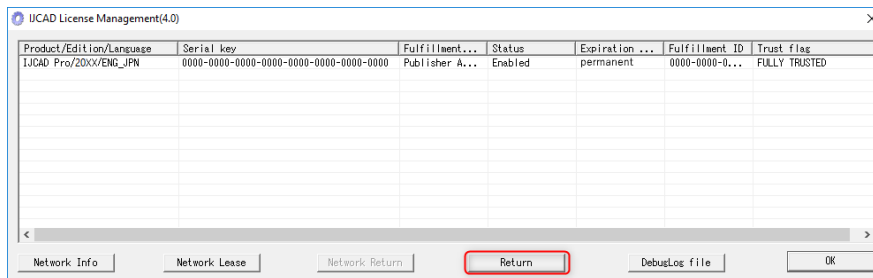
Select [*Start*] → [*IJCAD 2022 32 bit / 64 bit version*] → [*IJCAD license management*].

For Windows11

Select [*Start*] → [*All apps*] → [*IJCAD 2022 32 bit / 64 bit version*] → [*IJCAD license management*].

② Select Return License

The license information in use of the current machine will be displayed on the dialog. Click [**Return**] button, after selecting the license to return.



③ Input Applicant Information

[**Return License Information**] Dialog will be displayed.

Enter Applicant Information and Reason for application and click [**Procedure Online**] button.

(If you select "**Other reasons**", please describe the details.)

④ Return Finish

Please check [**Notes**] and select the check box and click [**OK**] button.

Refer to "[3. License Registration](#)", when re-registering the license is necessary.

4-2. Standalone version (Email Application)

If you can not return the license online, you can get a Return Authorization File from Intelli Japan applying by email.
In case of the email application, it may take 2 ~ 3 business days to get the reply depending on the situation.

① Launch IJCAD License Management

Open the [*IJCAD License Management*] dialog as follows.

For Windows8.1

Select [*Start*] → [*All Application*] → [*IJCAD 2022 32 bit / 64 bit version*] → [*IJCAD license management*].

For Windows10

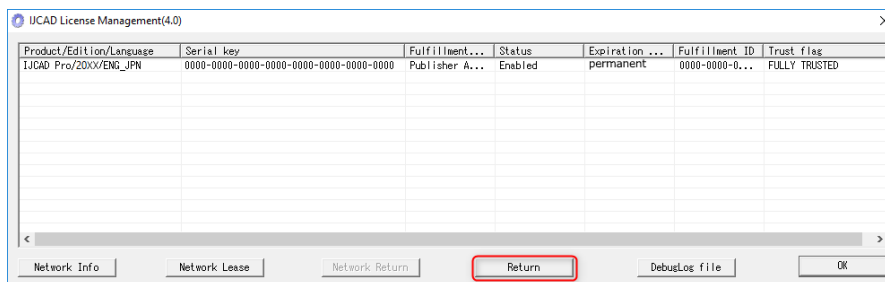
Select [*Start*] → [*IJCAD 2022 32 bit / 64 bit version*] → [*IJCAD license management*].

For Windows11

Select [*Start*] → [*All apps*] → [*IJCAD 2022 32 bit / 64 bit version*] → [*IJCAD license management*].

② Select Return License

The license information in use of the current machine will be displayed on the dialog. Click [*Return*] button, after selecting the license to return.



③ Input Applicant Information

[*Return License Information*] Dialog will be displayed.

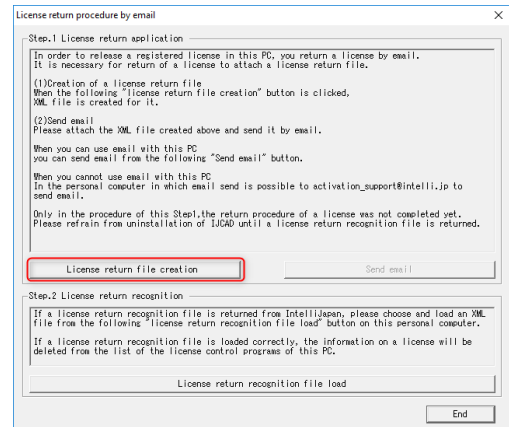
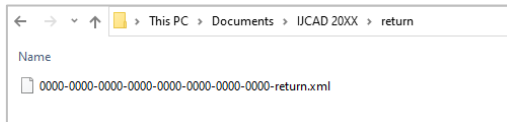
Enter Applicant Information and Reason for Application and click [*Procedure Online*] button.

(If you select "*Other reasons*", please describe the details.)

④ Create Return License File

Click [**Create license information file**].

The return file name "**<license key>-return.xml**" will be automatically created in [**Documents**] » [**IJCAD 2022**] » [**return**] folder.



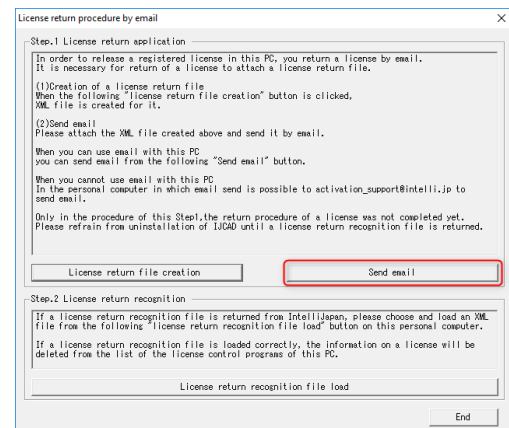
⑤ Email Application

Please click [**Send Mail**] if you want to authenticate with a PC where you can send and receive email.

The information file is not attached to the email.

Please attach the return file created in step ④ and then send the email.

If your PC can not send an email, move the return file by USB memory to the other computer that can send and receive email in order to apply.
(It is possible to submit multiple licenses together.)



- **Company Name**
- **Person In charge**
- **Telephone Number**
- **Computer Name**
- **Serial Key**
- **License Key**

Please fill the above items into the email with your information file and send to activation_support@intelli.jp

Please wait for the reply from Intelli Japan after applying.

※ License Return procedure has not been completed at this stage.

Please refrain from uninstalling IJCAD until return procedure will be completed.

⑥ Receive Return Approval File

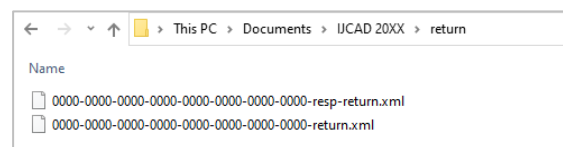
In a few days, the Activation file will be delivered from Intelli Japan.

Intelli Japan sends the return authorization file from the system, and this file is not received as an attached file, but as a link in the email text.

(Refer to the procedure [step ⑤ of "3-2. Standalone version \(Email Application\)"](#) for more details of the receipt method.)

The file name of the return approval file is "**<license key> - resp - return.xml**".

It is recommended to save the return approval file in the [**Document**] » [**IJCAD 2022**] » [**return**] folder where the return file is saved.



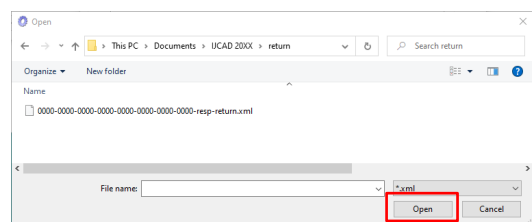
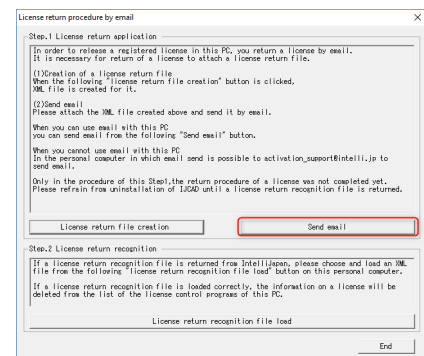
⑦ Load Return Approval File

Open the [**License Return Procedure by Email**] dialog as same way as in step ① ~ ③.

Click [**Read license return approval file**].

Select [**Open**] dialog, then [**Document**] » [**IJCAD 2022**] » [**return**] folder opens.

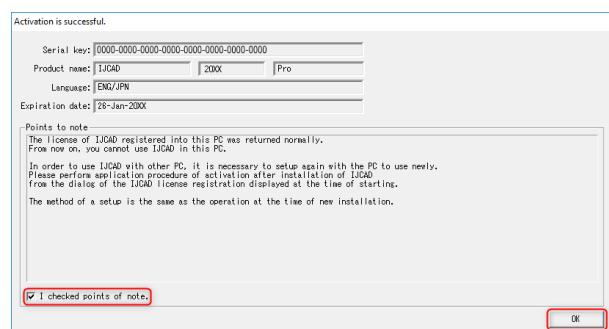
Select the file of "**<license key> - resp - return.xml**" saved in step ⑥ and click [**Open**].



⑧ Return Finish

Please check [**Notes**], select the check box and click [**OK**].

When re-registering the license, refer to "[3. License Registration](#)".



5. Update Installation

When you want to update version of the installed product, update installation is necessary.

5-1. Before Update Installation

- You do not need to return your license when update installation. After update installation, you can use the current registered license.
- Although the information of CUI and template customization could be inherited without transit operation, first take your backup before update installation for your safety.

Cuix file, etc.

⇒C:¥Users¥ (User Name) ¥AppData¥Roaming¥IntelliJapan
¥IJCAD (Grade) ¥R22¥en-US¥Support

Template File

⇒C:¥Users¥(User Name) ¥AppData¥Local¥IntelliJapan
¥IJCAD(Grade)¥R22¥en-US¥Template

5-2. User Registration

When downloading the latest version, user login is required.

If you have not yet done user registration, register on the WEB page (<https://www.ijcad.jp/>).

If you have already registered, refer to "[5-3. Update Installation procedure](#)".

5-3. Update Installation procedure

① Download the latest Installer

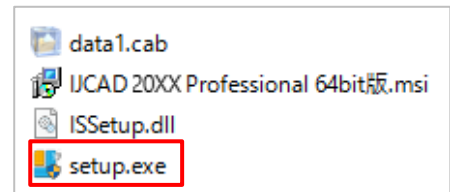
The latest version can be downloaded from the WEB page (<https://www.ijcad.jp/>).

※ User login is required to download.

② Launch the Installer

Decompress the downloaded file, and execute [setup.exe] in the folder as administrator by right click of mouse.

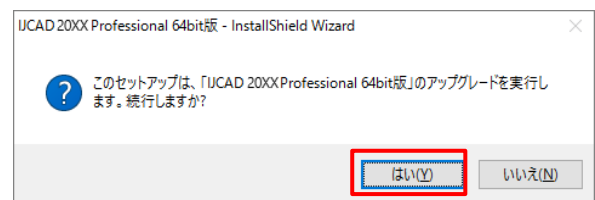
The installer launches.



③ Update Installation

After launching the installer, a dialog like the right picture appears.

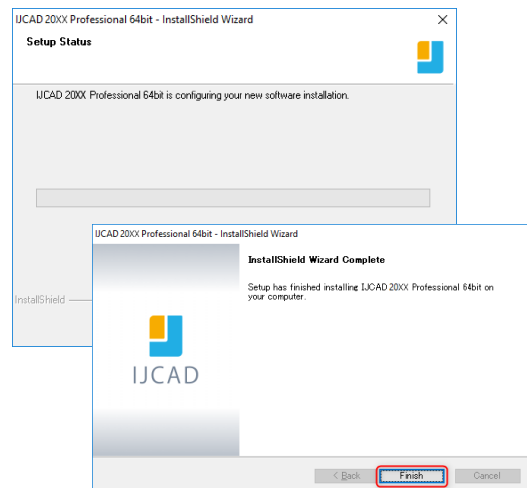
Click [**Yes**] button.



④ Installation

Installation will start.
Please wait.

When the completion message is displayed, click [**Finish**] button.



- ※ In case that the update installation fails, try to perform a new installation after uninstalling the current IJCAD.

6. Uninstall of program

If the IJCAD program is damaged for some reason, you need to reinstall it or if you need to delete it from your computer, uninstall the program.

6-1. Before Uninstallation

- In order to inherit information on CUI and template customization, first save the customization file to a different location.

Cuix file, etc.

⇒C:¥Users¥(User Name)¥AppData¥Roaming¥IntelliJapan
¥IJCAD(Grade)¥R22¥en-US¥Support

Move them back to the same folder after re-installation.

Template file

⇒C:¥Users¥(User Name)¥AppData¥Local¥IntelliJapan
¥IJCAD(Grade)¥R22¥en-US¥Template

Move them back to the same folder after re-installation.

- If you are replacing the OS or initializing the OS with the standalone version, you need to return the license before uninstalling.
For more details, refer to "[4. Return License](#)".

Even if uninstallation procedure is performed, the license information remains in the PC when you reinstall with the same OS. Then you do not need to return or re-register the license.

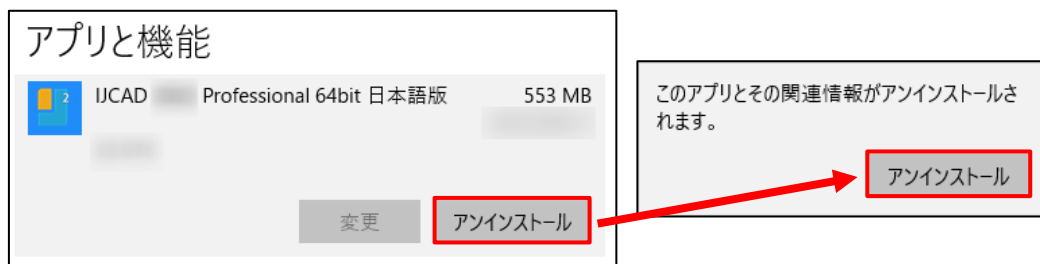
6-2-1. Uninstallation Procedure(Apps and features)

① Go to the uninstallation menu

Right-click on the Start menu, click " Apps and features ", and then follow the steps below to open the uninstallation menu.

For Windows 10

Select [IJCAD 2022] from the list of applications, and then click [Uninstall] from the menu that appears.



For Windows 11

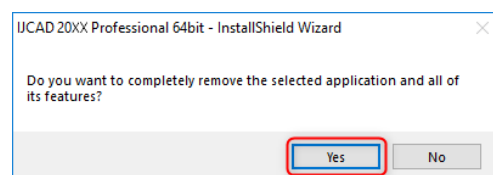
Select [IJCAD 2022] from the list of applications, click the [:] button on the right, and then click [Uninstall] from the menu that appears.



② Uninstallation

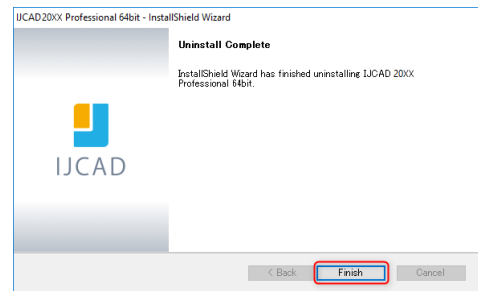
Select [IJCAD 2022] from the list, at the same time right-click the mouse and click [Uninstall] from the displayed menu.

The installer starts up and a confirmation message is displayed. Click [**Yes**] button.



③ Uninstallation Finish

When the completion dialog is displayed, click [**Finish**] button to finish.



④ Delete User Data

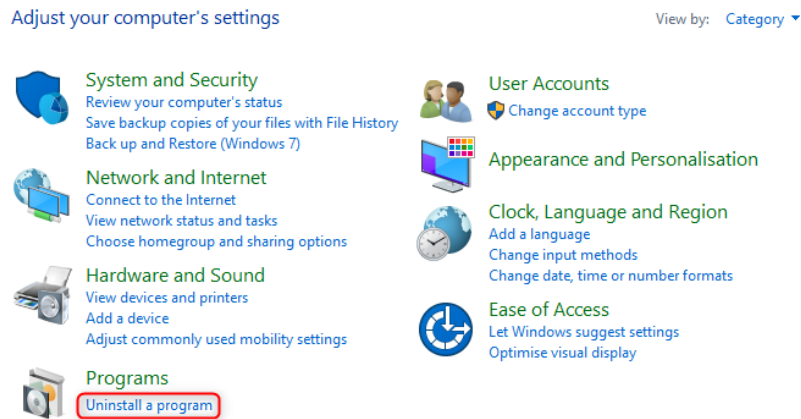
After uninstalling IJCAD programs, delete user data. The Uninstallation procedure is completed.

C:\Users\%(User Name)\AppData\Roaming\IntelliJapan
¥IJCAD(grade)¥R22

6-2-2. Uninstallation Procedure(Control Panel)

① Go to the uninstallation menu

Open the Control Panel and select [Uninstall a program].

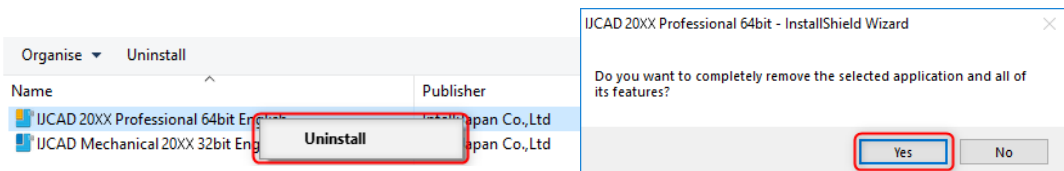


In Windows 8.1, you can open the control panel from the right click on the start button.

② Uninstallation

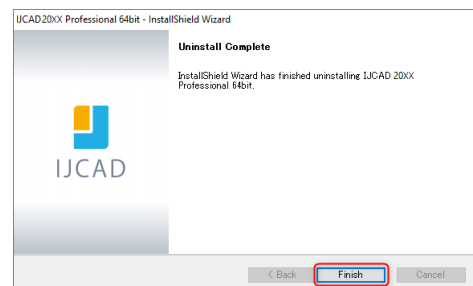
Select [IJCAD 2022] from the list, at the same time right-click the mouse and click [Uninstall] from the displayed menu.

The installer starts up and a confirmation message is displayed. Click [**Yes**] button.



③ Uninstallation Finish

When the completion dialog is displayed, click [**Finish**] button to finish.



④ Delete User Data

After uninstalling IJCAD programs, delete user data. The Uninstallation procedure is completed.

C:¥Users¥(User Name)¥AppData¥Roaming¥IntelliJapan
¥IJCAD(grade)¥R22

7. Subscription License

7-1. Attention

The license acquired in the maintenance subscription contract can be used not only for this product, but also for the conventional products, the products before IJCAD2022.

By authenticating this product with a license for maintenance subscription, Licenses of conventional products are automatically authenticated. It is not necessary to activate individually for each conventional version.

For subscription users, see ["8. Installation for Version Up"](#) Perform setup.

8. Installation for Version Up

Follow the procedure described here to upgrade IJCAD version.

8-1. Standalone version

① Return the Old License

New License Registration(In the same machine)

There is no need to return the old license.

Other

It is necessary to return the old license.

Return license of previous version.

IJCAD 2015 (beside Build 150217), IJCAD 2016 or later products can be returned online.

Refer to "[4-1. Standalone version \(On-line\)](#)".

Refer to "[4-2. Standalone version \(Email application\)](#)", if you can not return online.

② Installation of IJCAD

Refer to "[2. New Installation of Program](#)".

③ New License Registration

IJCAD 2015 (beside Build 150217), IJCAD 2016 or later products can be online authenticated.

Refer to "[3-1. Standalone version \(On-line\)](#)".

Refer to "[3-2. Standalone version \(Email Application\)](#)" If you can not return online.

8-2. USB Version

You can update the license version of the current USB key in use by the following procedure.

With the updated USB license, it is possible to use not only this product but also the previous version of IJCAD.

(Please use licenses within the range licensed from Intelli Japan)

※ When updating the USB key, note to use the serial key which is not used for the update application.

It is not possible to apply for multiple USB keys using the same serial key.

◆ Authenticate by online

① Insert USB Key

Please prepare the USB key of your IJCAD.

Insert the USB key into the USB drive of your computer.

※ When the USB is loaded correctly, the part behind the USB glows red.

② Launch IJCAD_UsbUpdater.exe

Launch "IJCAD_UsbUpdater.exe" by the following procedure.

For Windows8.1

[Start] → [All programs] → [IJCAD 2022 32bit/64bit version] →
Select [IJCAD_UsbUpdater.exe]

For Windows10

[Start] → [IJCAD 2022 32bit/64bit version] →Select
[IJCAD_UsbUpdater.exe]

For Windows11

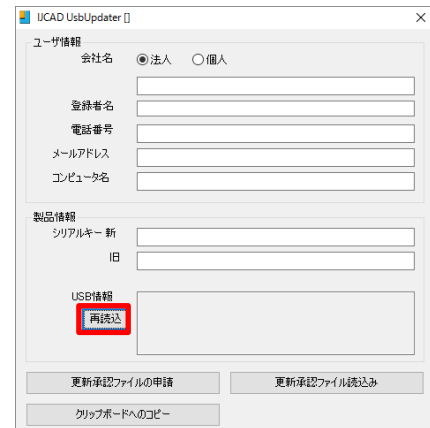
[Start] → [All apps] → [IJCAD 2022 32 bit / 64 bit version] → Select
[IJCAD_UsbUpdater.exe].

③ Confirmation of USB Information

[*IJCAD_UsbUpdater*] dialog opens.

Check if the USB key version or grade is correct, in [*USB Information*].

※If license information is not displayed, click [*Reload*] and load the USB key information

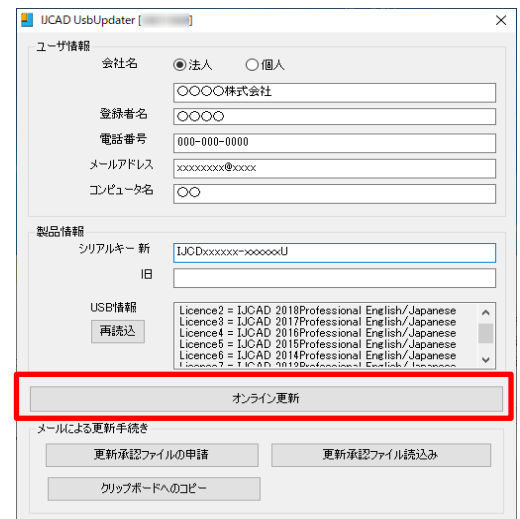


④ Input Requirements

Enter [*User information*] & [*Product information*].

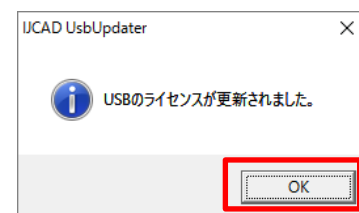
Please enter the serial key to "New Serial Key". The serial key is described in the PDF file attached to the email sent from Intelli Japan when delivery.

When input of all items is completed, click [*Online Update*] button.



⑤ Update Finish

When the license information is updated, a completion message will be displayed, then click [*OK*] button.



⑥ Reload

In the [*IJCAD_UsbUpdater*] dialog, click [*Reload*] button and check that [*USB Information*] is updated.

If it has been changed as follows, the subscription license update is completed.

The screenshot shows the 'IJCAD UsbUpdater' dialog box. The 'USB情報' section is expanded, showing a list of licenses:

ライセンス名	年	タイプ	言語
Licence1	IJCAD 2013	Professional	English/Japanese
Licence2	IJCAD 2014	Professional	English/Japanese
Licence3	IJCAD 2015	Professional	English/Japanese
Licence4	IJCAD 2016	Professional	English/Japanese
Licence5	IJCAD 2017	Professional	English/Japanese

In case for IJCAD 2022 License :

Licence1 = IJCAD 2013 (LT/STD/PRO) English/Japanese

Licence2 = IJCAD 2014 (LT/STD/PRO) English/Japanese

⋮

LicenceX = IJCAD 2022 (LT/STD/PRO) English/Japanese

◆ Authenticate by email

① Insert USB Key

Please prepare the USB key of your IJCAD.

Insert the USB key into the USB drive of your computer.

※ When the USB is loaded correctly, the part behind the USB glows red.

② Launch IJCAD_UsbUpdater.exe

Launch "IJCAD_UsbUpdater.exe" by the following procedure.

For Windows8.1

[Start] → [All programs] → [IJCAD 2022 32bit/64bit version] →
Select [IJCAD_UsbUpdater.exe]

For Windows10

[Start] → [IJCAD 2022 32bit/64bit version] →Select
[IJCAD_UsbUpdater.exe]

For Windows11

[Start] → [All apps] → [IJCAD 2022 32 bit / 64 bit version] → Select
[IJCAD_UsbUpdater.exe].

③ Confirmation of USB Information

[IJCAD_UsbUpdater] dialog opens.

Check if the USB key version or grade is correct, in [USB Information] .

※If license information is not displayed, click [Reload] and load the USB key information

④ Input Requirements

Enter [**User information**] & [**Product information**].

Please enter the serial key to "**New Serial Key**". The serial key is described in the PDF file attached to the email sent from Intelli Japan when delivery.

When input of all items is completed, click [**Apply for update approval file**] button.

If you can not send email from your computer, please proceed to step ⑥.

⑤ Send Application email

Automatic

The email form will launch.

Do not change the content of the text, and just send it.

Please wait for a reply from Intelli Japan after closing the dialogue, unplugging the USB key after applying.

※It may take 2 ~ 3 business days depending on the situation to issue approval file.

Manual

If you can not send email from the computer that executed [IJCAD_UsbUpdater.exe], click [Copy to clipboard].

Please paste it in a notepad etc. and send it by the following format from the computer that can send email.

- Send to : activation_support@intelli.jp
- Subject : IJCAD UsbUpdater request
- Text : (Paste from clipboard)

⑥ Receive Update Approval File

The update approval file will be delivered from Intelli Japan.

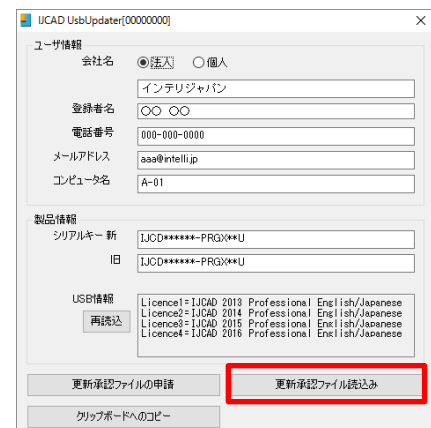
(activation_support@intelli.jp)

(file name "*response<8 digits>.livx*")

⑦ Load Update Approval File

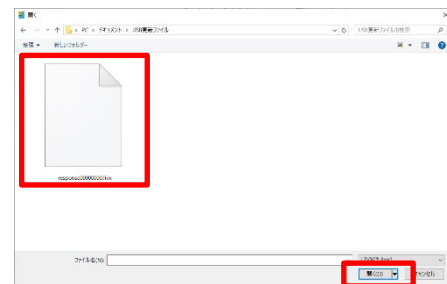
Start [IJCAD_UsbUpdater.exe] with USB key inserted again.

Click [*Refresh Approval File Read*] button.

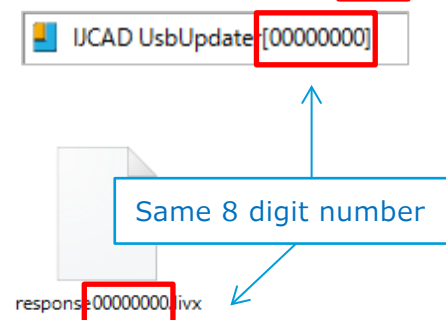


The [Open] dialog will be launched.

Please select the update approval file received by email and click [*Open*] button.

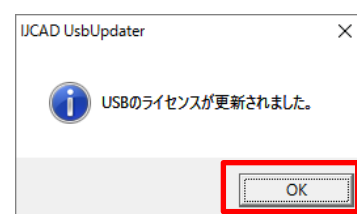


Here, please confirm that the 8 digit number displayed at the top of the [IJCAD_UsbUpdater] dialog has the same name of the file received by email. (If the number is different, you may be confused with a different USB key from application.)



⑧ Update Finish

When the license information is updated, a completion message will be displayed, then click [*OK*] button.



⑨ Reload

In the [*IJCAD_UsbUpdater*] dialog, click [*Reload*] button and check that [*USB Information*] is updated.

If it has been changed as follows, the subscription license update is completed.

In case for IJCAD 2022 License :

Licence1 = IJCAD 2013 (LT/STD/PRO) English/Japanese

Licence2 = IJCAD 2014 (LT/STD/PRO) English/Japanese

⋮

LicenceX = IJCAD 2022 (LT/STD/PRO) English/Japanese

8-3. Network License version

The network license version uses a license activated on the server side.

Therefore, if the server has been upgraded, it will be available.

For the server-side settings, refer to the separate "IJCAD_NLM_Setup Manual.pdf" please confirm.